

*For Commercial Applications*

Job Name		Engineer / Architect	
Job Location		Wholesaler	
Submittal Date		Contractor	

## 112 Series      I.P.S. Close Nipples – Male Iron Pipe x Male Iron Pipe

**Use:** Commercial food service applications

**Design Features:**

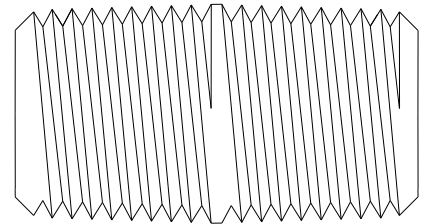
- **Finish machined one-piece brass body** provides strength, durability, and long-lasting performance

**Operating Specifications:**

**Temperature:** 32° to 125° F

**Pressure:** 1/2 PSI maximum

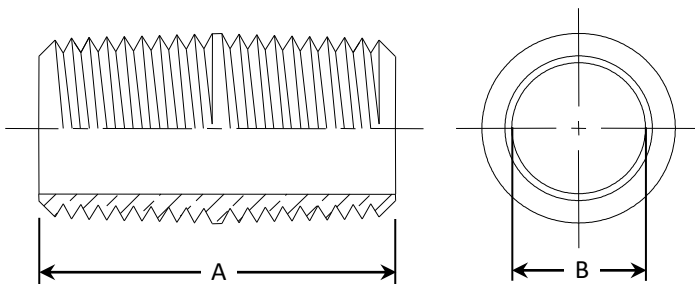
MATERIAL SPECIFICATIONS	
<b>Fitting</b>	Brass



**Part Listing:**

- 112-12CB      3/4" MIP, both ends, pipe nipple
- 112-16CB      1" MIP, both ends, pipe nipple

PART DIMENSIONS (Inches)		
Model	DIM. A	DIA. B
112-12CB	1.38	.825
112-16CB	1.38	1.075



*This specification and all information contained herein is the confidential and exclusive property of Brasscraft Manufacturing Company, and shall not be disclosed to others without the written consent of Brasscraft Mfg. Co. This specification must be returned to Brasscraft Mfg. Co. if requested.*

